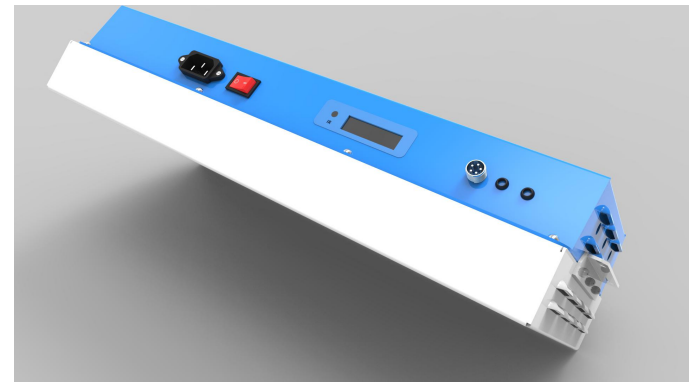


LuminiGrow_DANK 1000

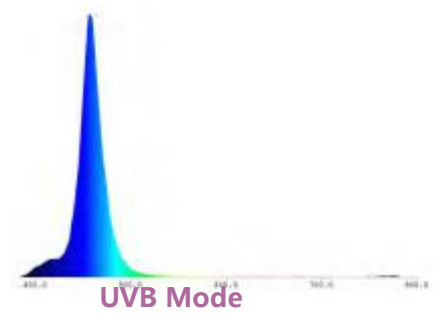
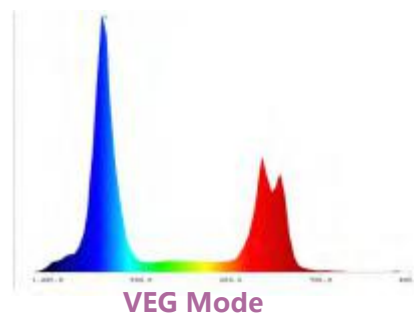
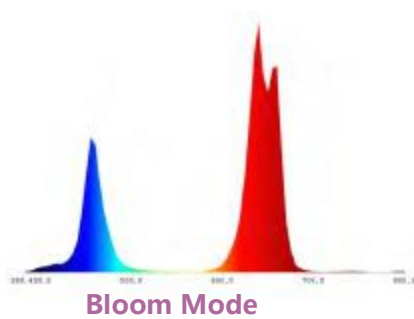
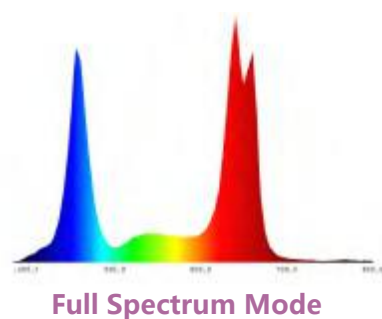
5W double-chip LEDs with Secondary Lens

High PAR Performance



Growth

LuminiGrow DANK 1000 is the most cost effective way for growers to boost healthy crop yields. Supplying full spectrum which is 100% absorbed by the plant. This cuts down the plant growth period, only 3 months growth cycle. LuminiGrow 400R3 is programmed for the spectrum sprouts and flowers, providing an automatic period.



Lumini Grow System

Programmable & Daisy chain
Dimming & Timing



Wifi Intelligent Control

We use the newest DMX and PWM technology, digital signal demand, more steady.

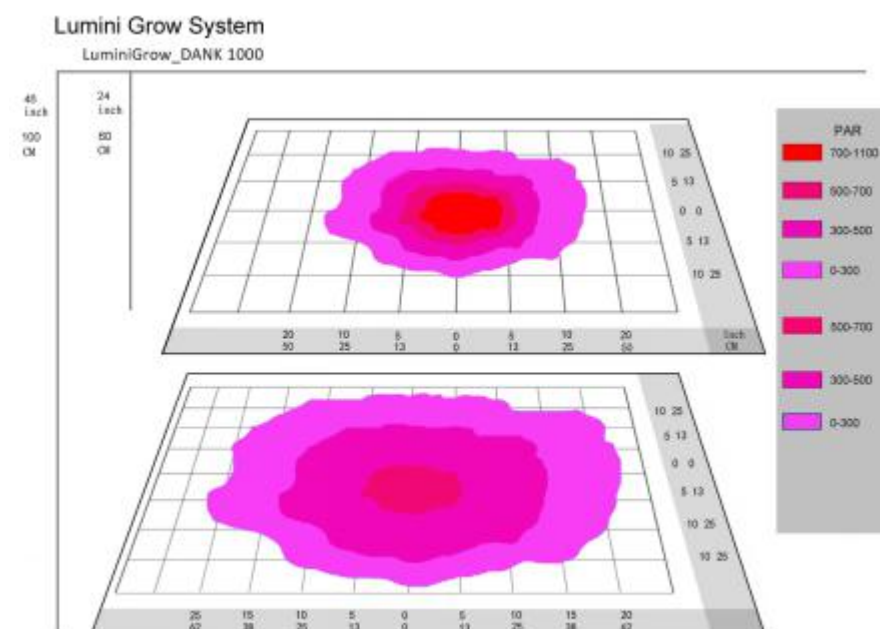
You can program the lamp via Android or iOS devices.

There are 4 individually adjustable channels, each with dimmer and timer, **Veg, Flower, UVB, full spectrum** mode, daisy chain system. The LCD display indicates the intensity in each channel and fans' working status.

Steady and smart voltage auto-switching regulating power supply, adjusts to the appropriate voltage for international use.

High Intensity

Many other LED brands are running with lower wattage and lesser input current. We use full 5W Double-chip LEDs which are running at standard 900mA driving current, providing high brightness and efficiency, longer lifespan. And the leds are combined with 90 degree secondary lens, the light is more focusing with higher PAR value, brightness is equal to a 1000W HPS lighting.



Main Specification

Actual power: 390~410 watts

1.81 A & 220V; 3.73 A & 110V

Frequency: 50/60Hz

AC Cable Length: 4ft

Universal Input Range: 100~240VAC / 50 to 60Hz

CRI (Ra>): 75

Working Temperature(°C):-25°C~55°C

Driver: 1 x Mean Well

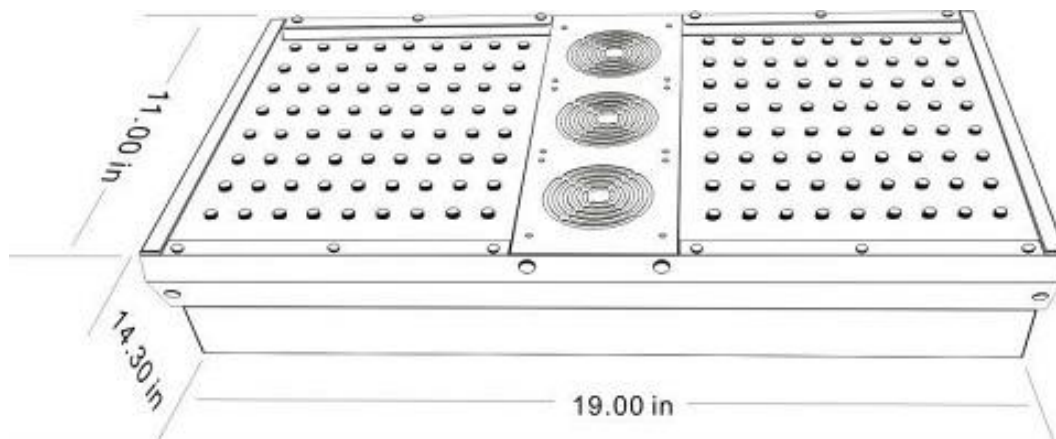
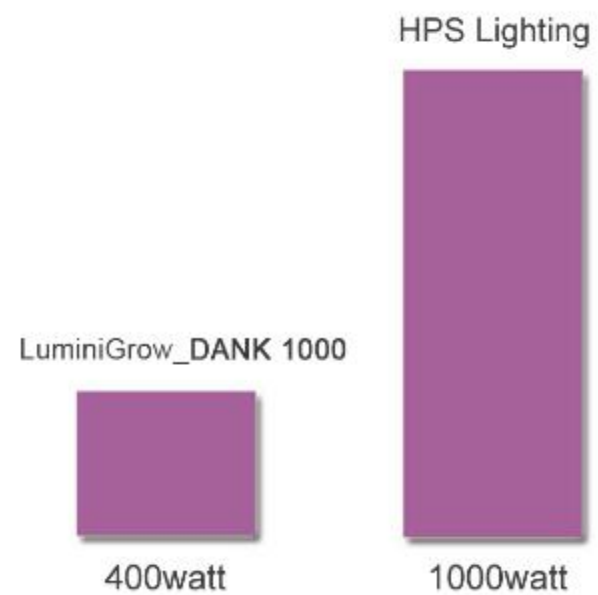
Certification: ETL & CE & ROHS

Warranty : 1 year warranty, lifetime maintenance



Efficiency

LuminiGrow DANK 1000 uses approximately 60% less power than a 1000 watt HPS, and produce crops with better yields. Plants in different phases of growth have different demand on the light. This light provides 4 programmable channels which allows you to customize the exact spectrum and save energy by reducing intensity for young seedling.



Dimensions

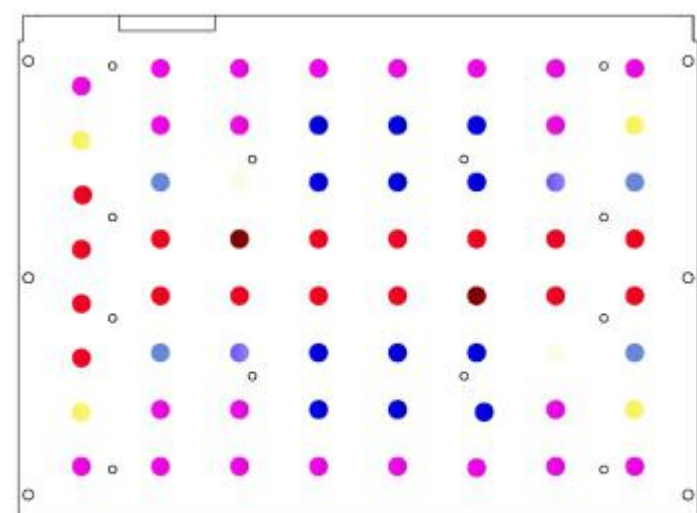
Length: 19.00 inches
 Width: 11.00 inches
 Height: 4.30 inches
 Weight: 9.0kg

LEDs

- 2 x 22 pcs Red 5W LEDs
- 2 x 16 pcs Deep Red 5W LEDs
- 2 x 2 pcs IR 5W LEDs
- 2 x 4 pcs warm white 5W LEDs
- 2 x 2 pcs cool white 5W LEDs
- 2 x 4 pcs Blue 5W LEDs
- 2 x 12 pcs Royal Blue 5W LEDs
- 2 x 2 pcs UV 5W LEDs

Total-128pcs*5w

Lifespan: > 50000Hrs



- 22PCS red
- 16PCS Deep red
- 2PCS IR
- 12PCS Royal Blue
- 4PCS Blue
- 2PCS UV
- 4PCS

LED layout in each channel

- Channel 1: 2 x 16 pcs - Deep Red + 2 x 2 pcs - IR
- Channel 2: 2 x 6 pcs - White+ 2 x 4 pcs-Blue + 2 x 2 pcs UV
- Channel 3: 2 x 12 pcs - Royal Blue
- Channel 4: 2 x 22 pcs - Red